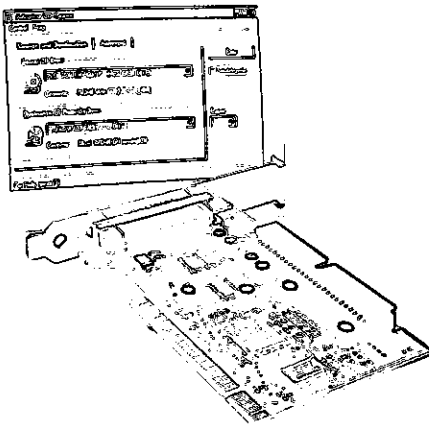


# ADAPTEC®

## AVA™-1505

Ideal for connecting Zip drives and scanners to your PC



### PRODUCT HIGHLIGHTS

- Fast, easy installation
- 10 MB/sec synchronous burst rate on the SCSI bus
- Adaptec EZ-SCSI® *Lite*® software
- Operating system support: Windows® 95, Windows NT™, Windows® 3.11, and MS-DOS®

### Overview

The growing need to digitize large amounts of visual information — and the popularity of today's new storage formats — has resulted in an explosion of demand for faster, higher performing peripherals. With an entry-level connection to a variety of popular SCSI devices, the AVA-1505 host adapter provides the ideal solution for fast, reliable data transfer to SCSI peripherals.

### Key Benefits

#### Maximize Peripheral Performance

The AVA-1505 gives users a high-performance alternative to the computer's slow parallel port. It allows users to take advantage of faster SCSI versions of non-booting peripherals such as scanners and Zip drives.

With wait times reduced up to 80%, the AVA-1505 gives users an increase in system performance. And, since SCSI is the only connection that allows the attachment of multiple external peripherals, the AVA-1505 allows users to connect more devices to their systems.

### Easy to Install and Use

Getting started with the AVA-1505 is a breeze. Adaptec's user-friendly EZ-SCSI *Lite*, Windows software gives you everything you need to easily install and configure a variety of SCSI devices. EZ-SCSI *Lite* software determines which SCSI devices are present, loads the necessary drivers, and even modifies the system configuration files.

### Unmatched Compatibility

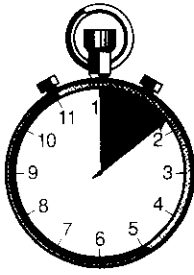
As with all Adaptec host adapters, the AVA-1505 has undergone rigorous compatibility testing in Adaptec test labs. With extensive compatibility, functionality, and environmental testing, users can be assured of having a product that works seamlessly with virtually any SCSI device available.

### Quality You Can Depend On

The AVA-1505 has received thousands of hours of reliability testing. Known for quality, Adaptec continues to deliver standard-setting products that are incorporated into the systems of virtually all major computer and peripheral manufacturers around the world.

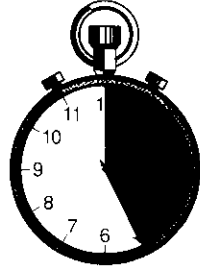
## Maximize Performance — Decrease the Wait!

### Zip Drive File Copy



**SCSI**

1 minute, 45 seconds

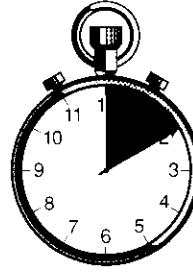


**Parallel**

5 minutes, 6 seconds

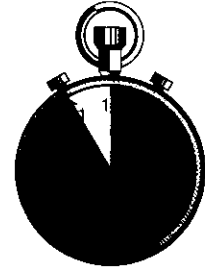
Benchmark configuration: Gateway 2000 P5-60 with 16 MB RAM and AVA-1505 under Windows 95. A 63 MB file is copied from an IDE hard drive to two different Zip drives: SCSI and parallel.

### Image Scan



**SCSI**

2 minutes

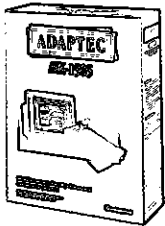


**Parallel**

11 minutes

Benchmark configuration: Dell P-60 Dimension XPS with 32 MB RAM and AVA-1505 under Windows 95 with Epson ES-1200C dual interface scanner. A color picture is scanned and a 26 MB, 300 dpi file is created.

### COMPLETE KIT CONTENTS



- AVA-1505 ISA-to-Fast SCSI host adapter
- Adaptec EZ-SCSI Lite Software
- Standard 3-position internal SCSI ribbon cable
- Complete user documentation

### EXTERNAL CONNECTOR



DB-25-pin (Macintosh-style)

### TECHNICAL SPECIFICATIONS

<b>Computer Bus:</b>	ISA
<b>Interface Protocol:</b>	Programmed I/O (PIO)
<b>Host Bus Burst Data Rate:</b>	10 MB/sec
<b>Peripheral Bus:</b>	8-bit SCSI
<b>SCSI Synchronous Data Rate:</b>	Up to 10 MB/sec
<b>SCSI Asynchronous Data Rate:</b>	Up to 3 MB/sec
<b>Device Protocol:</b>	SCSI-1, SCSI-2
<b>Advanced SCSI Features:</b>	-Advanced SCSI Programming Interface (ASPI) compliant -Disconnect/reconnect -Synchronous and asynchronous data transfer
<b>SCSI Termination:</b>	Single-ended passive
<b>Hard Disk Capacity:</b>	Up to 8 Gbytes per disk
<b>Device Support:</b>	Up to 7 devices under MS-DOS 5.0 and above
<b>Operating Environment:</b>	Microsoft® Windows 95, Windows 3.1, Windows for Workgroups, Windows NT, and MS-DOS
<b>Warranty:</b>	Five years

### PHYSICAL AND ENVIRONMENTAL SPECIFICATIONS

<b>Length:</b>	6.25 inches (15.9 cm)
<b>Height:</b>	3.5 inches (8.9 cm)
<b>Operating Temperature:</b>	0° C to 55° C
<b>Storage Temperature:</b>	-55° C to 85° C
<b>Humidity (operating):</b>	10% to 90%, non condensing
<b>Power Requirements:</b>	5.0V ± 0.25V at 0.51 amps, excluding terminator power

**adaptec**

We move the information that moves your world.™

Adaptec, Inc.  
691 South Milpitas Boulevard  
Milpitas, California 95035  
Tel: (408) 945-8600  
Fax: (408) 262-2533

**Adaptec Europe-Belgium**  
Tel: (32) 2-352-34-11  
Fax: (32) 2-352-34-00

**Adaptec Japan-Tokyo**  
Tel: (81) 3-5365-6700  
Fax: ((81) 3-5365-6950

**Adaptec Singapore**  
Tel: (65) 278-7300  
Fax: (65) 273-0163

**Literature:**  
1-800-934-2766 (USA and Canada)  
or (510) 732-3829

**Pre-sales Support:**  
1-800-442-7274 (USA and Canada)  
or (408) 957-7274

**World Wide Web:** <http://www.adaptec.com>

**Internet ftp server:** <ftp.adaptec.com>

**CompuServe:** GO ADAPTEC

**Adaptec USA Bulletin Board Service (BBS):**  
(408) 945-7727 (up to 28,800 bps,  
using 8 bits, 1 stop bit, no parity)

**Interactive FAX:** (408) 957-7150

Copyright 1997 Adaptec, Inc. All rights reserved. Adaptec, the Adaptec logo, the Adaptec tagline, AVA and EZ-SCSI Lite are trademarks of Adaptec, Inc., which may be registered in some jurisdictions. Microsoft, Windows, and Windows 95, are registered trademarks, and Windows NT is a trademark of Microsoft Corporation used under license. All other trademarks used are owned by their respective owners.

Information supplied by Adaptec, Inc. is believed to be accurate and reliable at the time of printing, but Adaptec, Inc. assumes no responsibility for any errors that may appear in this document. Adaptec, Inc. reserves the right, without notice, to make changes in product design or specifications. Information is subject to change without notice.